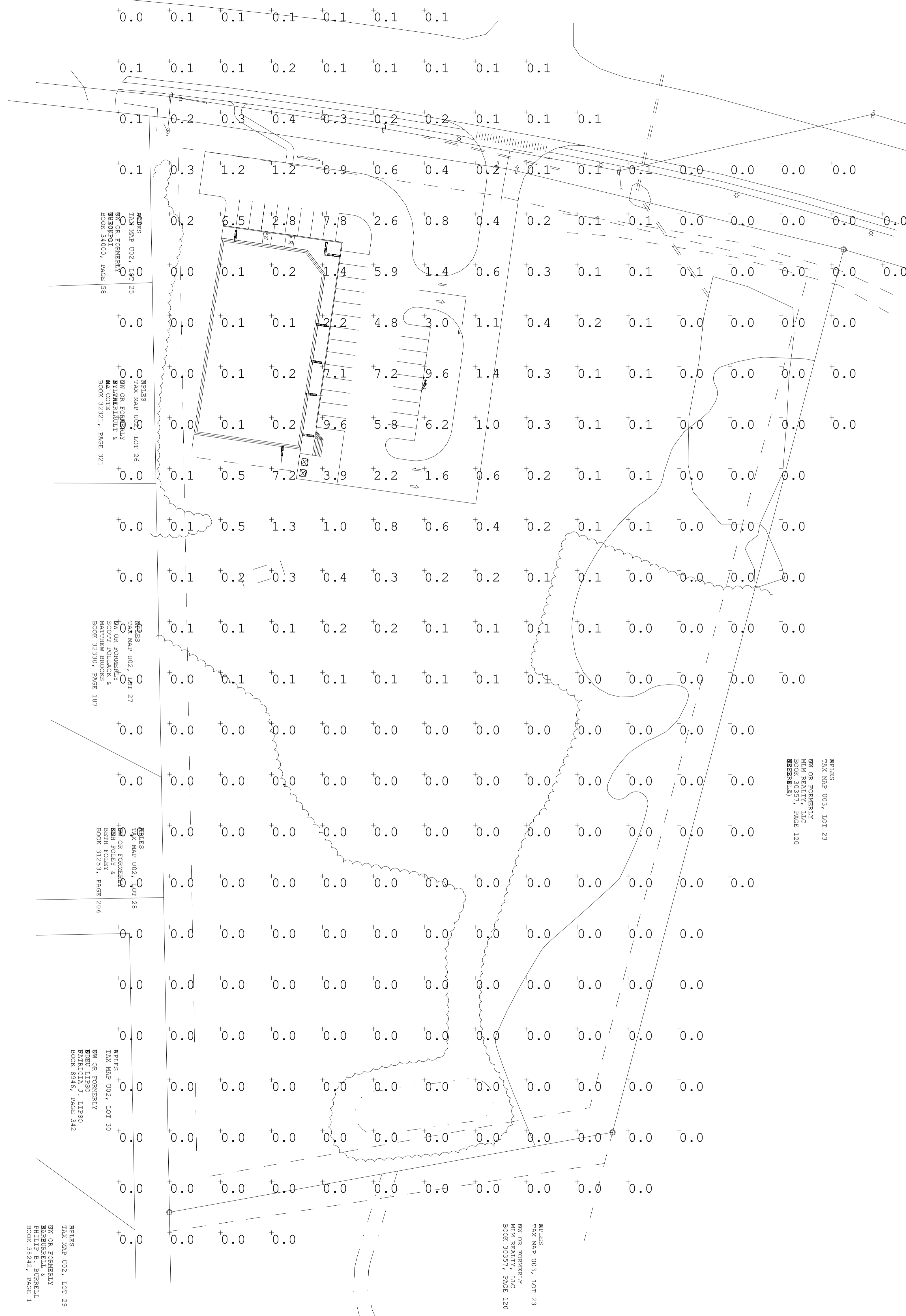


LIGHTING FIXTURE SCHEDULE									
NOTES: 1. ALL FIXTURES SHALL BE FURNISHED COMPLETE WITH ALL HARDWARE, LAMPS, HANGERS, FITTINGS, ETC. FOR A COMPLETE AND PROPER INSTALLATION.									
TYPE	DESCRIPTION	LENS	MOUNTING	LAMP	VOLT	WATT	MFR	CATALOG SERIES	APPROVED MANUFACTURERS
G	SURFACE MOUNT LED WALL PACK	CLEAR	SURFACE	LED	120 V	37 W	USLED	WPR3-UNVL-37-2-3-0-BZ-PC	APPROVED EQUAL
H	SURFACE MOUNT LED WALL PACK	CLEAR	SURFACE	LED	120 V	37 W	USLED	WPR3-UNVL-37-2-3-0-BZ-PC	APPROVED EQUAL
S	POLE MOUNTED SITE LIGHTING	CLEAR	POLE	LED	120 V	100 W	USLED	RCAL15-UNVL-3-3-10SP-100W-51-HSS-BK	APPROVED EQUAL



NOTES:  
 TAX MAP 003, LOT 23  
 OWN OR FORWENTLY  
 GUN REALTY, LLC  
 1000 BURNING WOODS RD  
 NAPLES, MAINE 04758

NOTES:  
 TAX MAP 002, LOT 25  
 OWN OR FORWENTLY  
 BRYAN BROWN  
 BOOK 34000, PAGE 98

NOTES:  
 TAX MAP 002, LOT 26  
 OWN OR FORWENTLY  
 BRYAN BROWN  
 BOOK 32321, PAGE 121

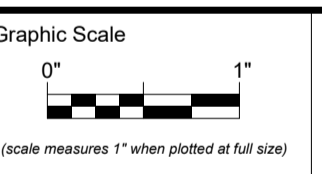
NOTES:  
 TAX MAP 002, LOT 27  
 OWN OR FORWENTLY  
 MATTHEW BROWN  
 BOOK 32320, PAGE 187

NOTES:  
 TAX MAP 002, LOT 28  
 OWN OR FORWENTLY  
 BETTE POOLE  
 BOOK 31534, PAGE 206

NOTES:  
 TAX MAP 002, LOT 30  
 OWN OR FORWENTLY  
 PATRICIA A. LIEBO  
 BOOK 32499, PAGE 302

NOTES:  
 TAX MAP 002, LOT 29  
 OWN OR FORWENTLY  
 BALDWIN & BISHOP  
 BOOK 38242, PAGE 1

NOTES:  
 TAX MAP 003, LOT 23  
 OWN OR FORWENTLY  
 GUN REALTY, LLC  
 BOOK 30351, PAGE 130



**PRELIMINARY  
 NOT FOR  
 CONSTRUCTION**

**ISSUED FOR REVIEW**

MAY 15, 2024

Revision Date	Revision Description
07-07-2024	REVISED FOR PLANNING BOARD

Drawn by: ATB

ELECTRICAL SITE PLAN

**E08-1**