

MAIN-LAND
DEVELOPMENT
CONSULTANTS, INC.

69 MAIN ST. LIVERMORE FALLS, MAINE
367 US ROUTE 1 FALMOUTH, MAINE
PH: (207) 897-6732 FAX: (207) 897-5404
WWW.MAIN-LANDDC.COM

PROJECT
**NAPLES
DOLLAR GENERAL**

ROUTE 302
NAPLES, MAINE 04055

OWNER OF RECORD
DPC, LLC

PO BOX 177,
NAPLES, MAINE 04055

MADE FOR
**DANIEL
CRAFFEY**

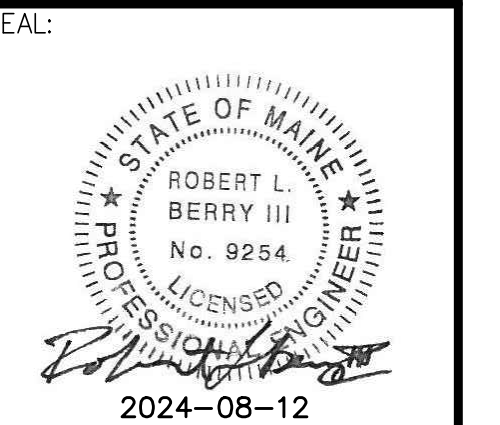
PO BOX 177
NAPLES, MAINE 04055

DRAWING SCALE:
40 0 20 40
(IN FEET)
1 INCH = 40 FT

SUBMISSION NOTES:
SUBMISSION 1: 2024-05-06 TLB FOR REVIEW.
SUBMISSION 2: 2024-05-15 TLB FOR PERMITTING.
SUBMISSION 3: 2024-08-12 TLB FOR PERMITTING, REVISED PER PLANNING BOARD COMMENTS.

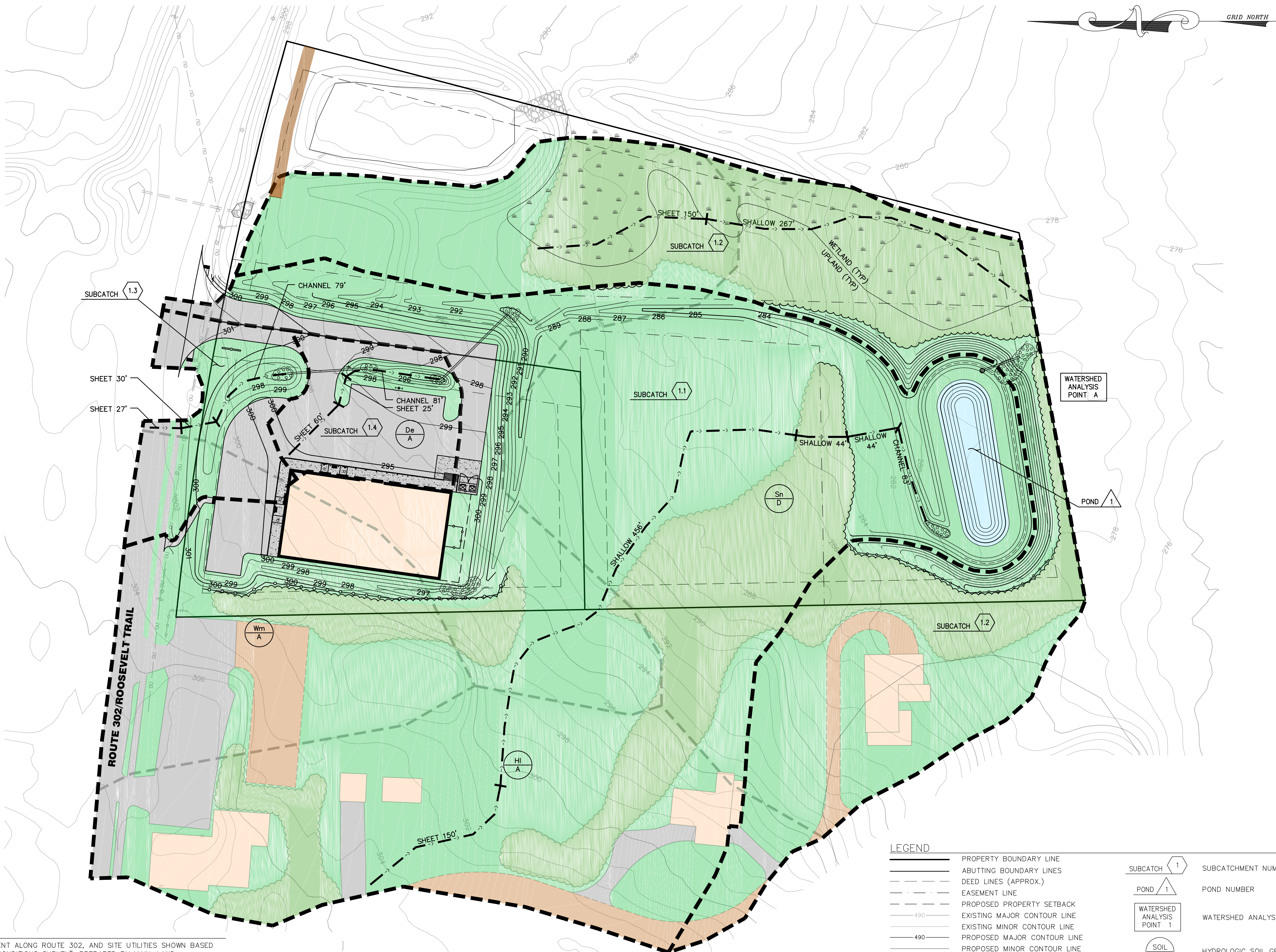
PROJ. MGR: RLB
DRAWN BY: TLB
CHECKED BY: RLB
SUBMISSION NO. 3
SURVEY DATE: 2024-02-12
SUBMISSION DATE: 2024-08-12
SUBMITTED FOR: PERMITTING

NOT FOR CONSTRUCTION
**POST-
DEVELOPMENT
DRAINAGE PLAN**



ROBERT L. BERRY III ME PE #9254
DRAWING NO.

D2.1
MLDC NO. 24-034 2 OF 2



LEGEND	
	PROPERTY BOUNDARY LINE
	ABUTTING BOUNDARY LINES
	DEED LINES (APPROX.)
	EASEMENT LINE
	PROPOSED PROPERTY SETBACK
	EXISTING MAJOR CONTOUR LINE
	PROPOSED MAJOR CONTOUR LINE
	EXISTING MINOR CONTOUR LINE
	PROPOSED MINOR CONTOUR LINE
	EXISTING EDGE OF GRAVEL
	EXISTING OVERHEAD UTILITY
	EXISTING DRAINAGE CULVERT
	EXISTING TREELINE
	NEW TREELINE
	SOILS BOUNDARY
	DRAINAGE FLOW LINES
	SUBCATCHMENT BOUNDARY
	SUBCATCHMENT NUMBER
	POND NUMBER
	WATERSHED ANALYSIS POINT
	HYDROLOGIC SOIL GROUP LABEL
	PAVEMENT AREA
	ROOF AREA
	WOODED AREA
	GRASSED AREA
	GRAVEL AREA

SOILS LEGEND
Au - AU GRES
HI - HINCKLEY
Sn - SCANTIC
Wm - WINDSOR

- NOTES**
- PROPERTY BOUNDARIES, EDGE OF PAVEMENT ALONG ROUTE 302, AND SITE UTILITIES SHOWN BASED ON THE SURVEY PLAN TITLED "EXISTING CONDITIONS SURVEY", PREPARED BY MAIN-LAND DEVELOPMENT CONSULTANTS, INC. FOR DPC, LLC, PLAN DATED 2024-02-23.
 - EXISTING BUILDINGS, DRIVEWAYS, EDGE OF GRAVEL & TREELINES SHOWN ARE APPROXIMATE AND WERE DIGITIZED FROM GOOGLE EARTH AERIAL PHOTOGRAPHY.
 - CONTOURS SHOWN ARE BASED ON STATE OF MAINE LIDAR DATA AND WERE DOWNLOADED FROM [HTTP://COAST.NOAA.GOV](http://coast.noaa.gov) WITH A CONTOUR INTERVAL OF 1-FOOT. THE VERTICAL DATUM IS NAVD88.
 - HYDROLOGIC SOIL GROUP BASED ON SOILS MAP DOWNLOADED FROM NATURAL RESOURCES CONSERVATION SERVICE AT [HTTPS://WWW.NRCS.USDA.GO](https://www.nrcs.usda.gov).
 - THE STORMWATER MANAGEMENT PLAN PACKAGE, INCLUDING CALCULATIONS AND NARRATIVE, ARE AN INTEGRAL PART OF THE STORMWATER DRAINAGE STUDY.